

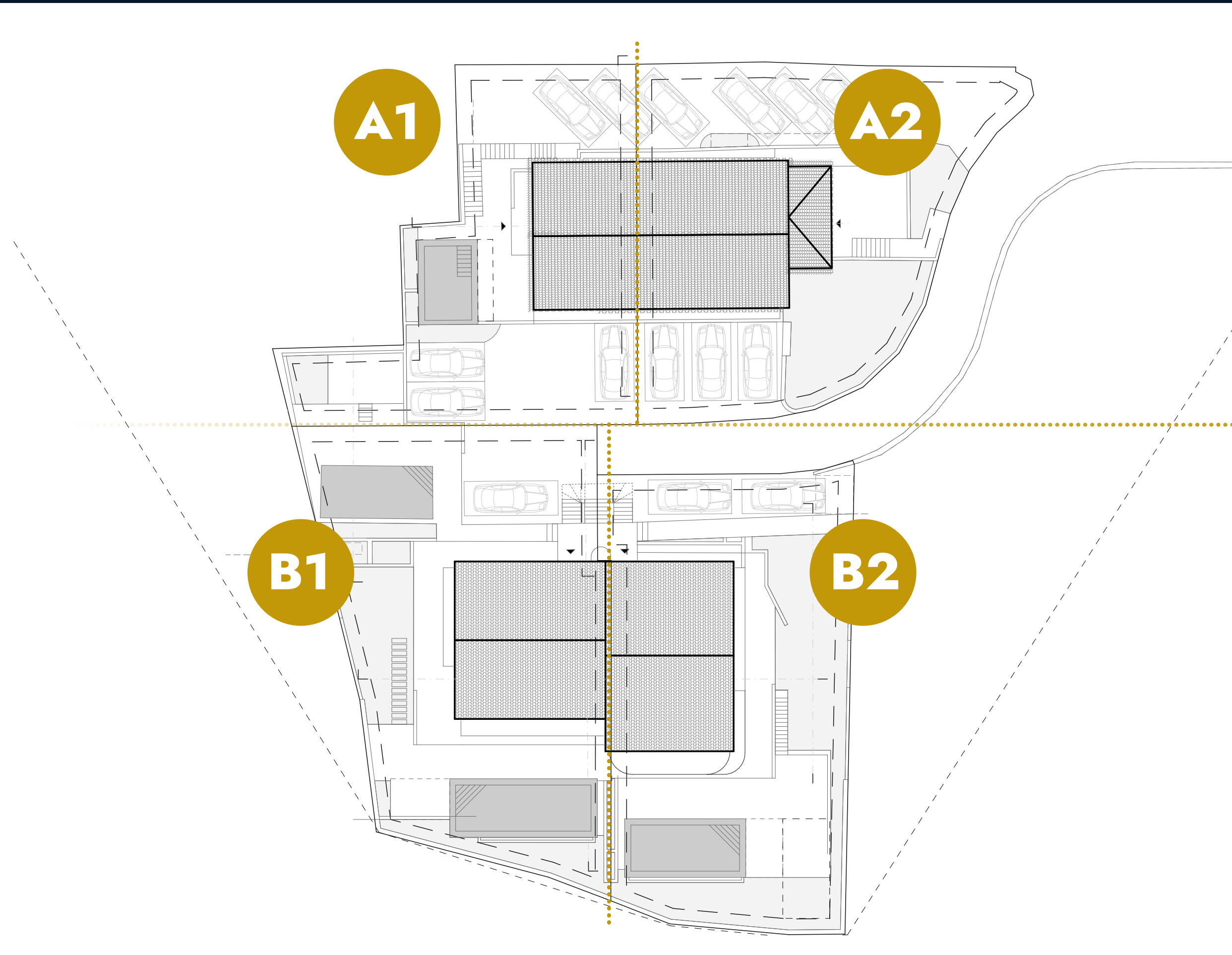


PANORAMIC SEA VIEW

# Bregi Residence

OPATIJA • CROATIA





A

B

PANORAMIC SEA VIEW  
*Bregi Residence*  
OPATIJA • CROATIA





PANORAMIC SEA VIEW  
*Bregi Residence*  
OPATIJA • CROATIA



# FASADA

OBJEKT A1



OBJEKT A2

STANOVANJE 1  
(duplex)

STANOVANJE 2

STANOVANJE 1

PANORAMIC SEA VIEW  
*Bregi Residence*  
OPATIJA · CROATIA

# OBJEKT A2

## STANOVANJE 1

### NOTRANJI PROSTORI

1. DNEVNI PROSTOR	31,40 m <sup>2</sup>
2. WC	2,30 m <sup>2</sup>
3. SOBA	15,30 m <sup>2</sup>
4. KOPALNICA	3,60 m <sup>2</sup>
5. SOBA	11,20 m <sup>2</sup>
6. KOPALNICA	3,60 m <sup>2</sup>

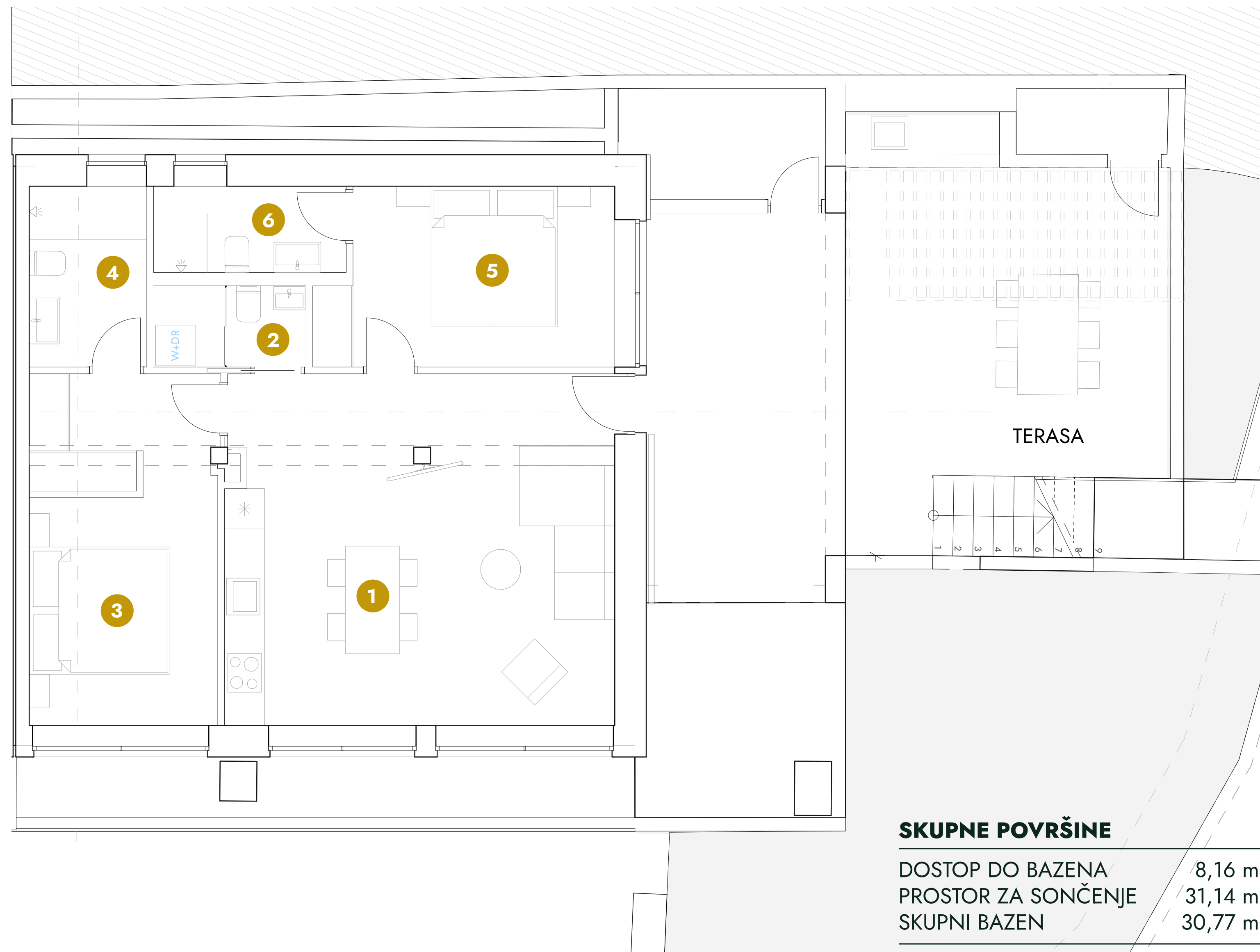
**NOTRANJA POVRŠINA** 68,10 m<sup>2</sup>

### ZUNANJI PROSTORI

POKRITA TERASA	19,00 m <sup>2</sup>
TERASA	19,20 m <sup>2</sup>
TERASA	25,60 m <sup>2</sup>
VRT	70,80 m <sup>2</sup>
PARKIRNO MESTO	13,50 m <sup>2</sup>
PARKIRNO MESTO	13,50 m <sup>2</sup>

**ZUNANJE POVRŠINE** 161,60 m<sup>2</sup>

**SKUPNA POVRŠINA** 229,70 m<sup>2</sup>



### SKUPNE POVRŠINE

DOSTOP DO BAZENA	8,16 m <sup>2</sup>
PROSTOR ZA SONČENJE	31,14 m <sup>2</sup>
SKUPNI BAZEN	30,77 m <sup>2</sup>

**70,07 m<sup>2</sup>**



BREGI RESIDENCE D.O.O.  
TRGOVAČKA ULICA 2A, 52470 UMAG, HRVAŠKA

E-mail: [info@bregi-residence.hr](mailto:info@bregi-residence.hr)