

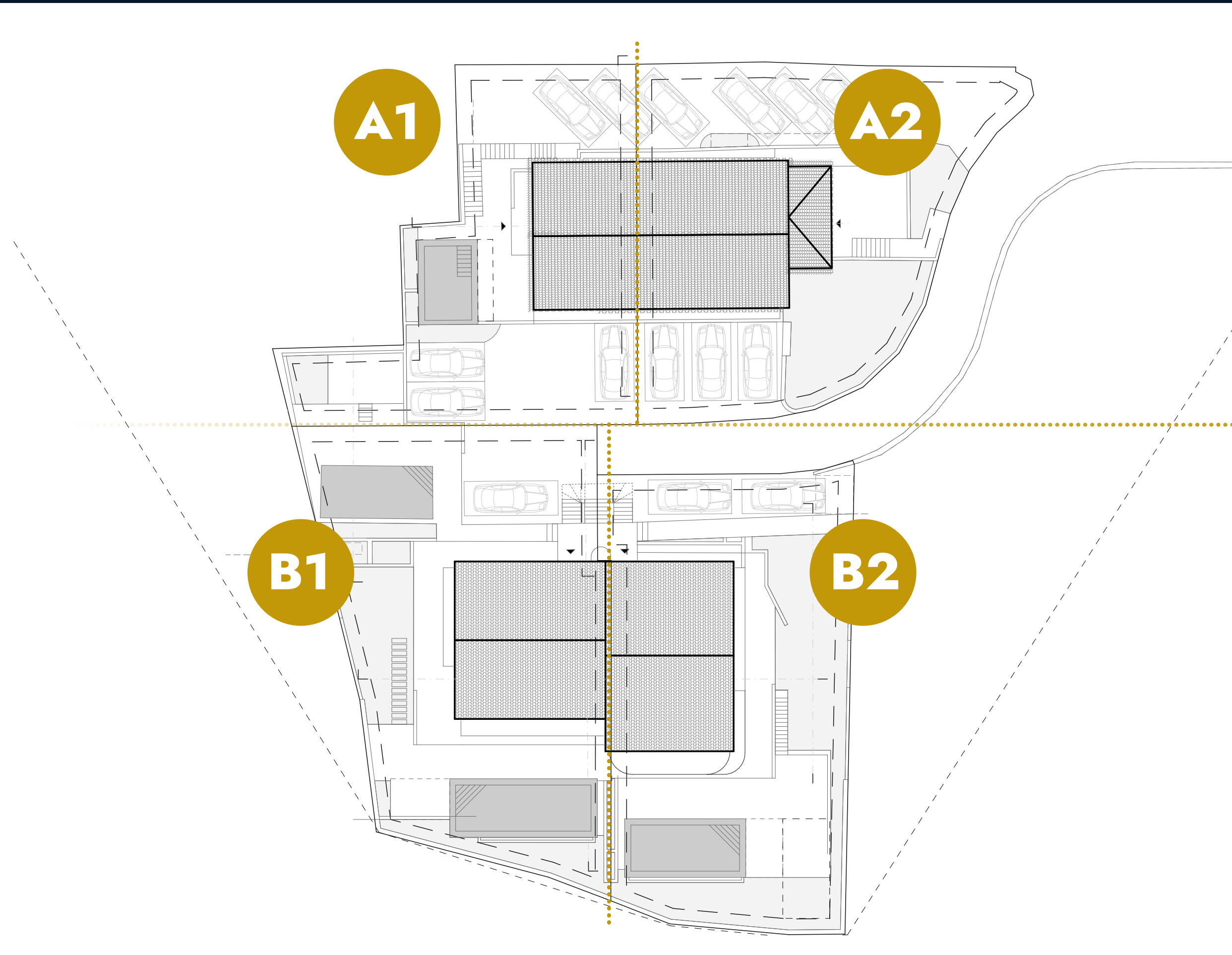


PANORAMIC SEA VIEW

# Bregi Residence

OPATIJA • CROATIA





A

B

PANORAMIC SEA VIEW  
*Bregi Residence*  
OPATIJA • CROATIA



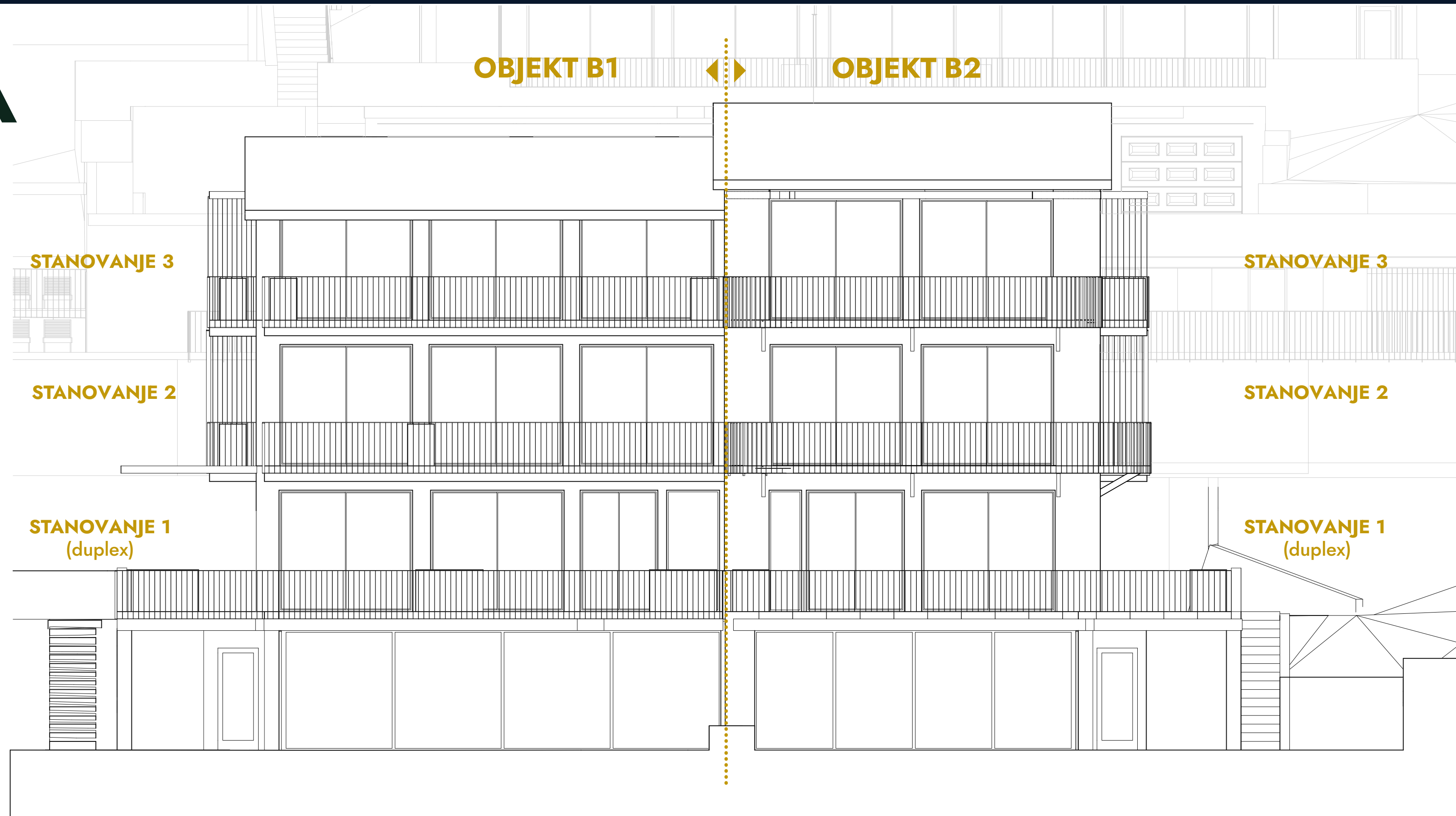
B



PANORAMIC SEA VIEW  
*Bregi Residence*  
OPATIJA • CROATIA



# FASADA



# OBJEKT B1

## STANOVANJE 2

### NOTRANJI PROSTORI

1. DNEVNI PROSTOR	28,69 m <sup>2</sup>
2. PREDSOBA	4,96 m <sup>2</sup>
3. HODNIK	5,95 m <sup>2</sup>
4. WC	1,35 m <sup>2</sup>
5. SHRAMBA	2,08 m <sup>2</sup>
6. SOBA	12,21 m <sup>2</sup>
7. KOPALNICA	2,98 m <sup>2</sup>
8. SOBA	11,84 m <sup>2</sup>
9. KOPALNICA	3,72 m <sup>2</sup>
SHRAMBA	3,94 m <sup>2</sup>
KLET	10,20 m <sup>2</sup>
GARAŽA	16,30 m <sup>2</sup>

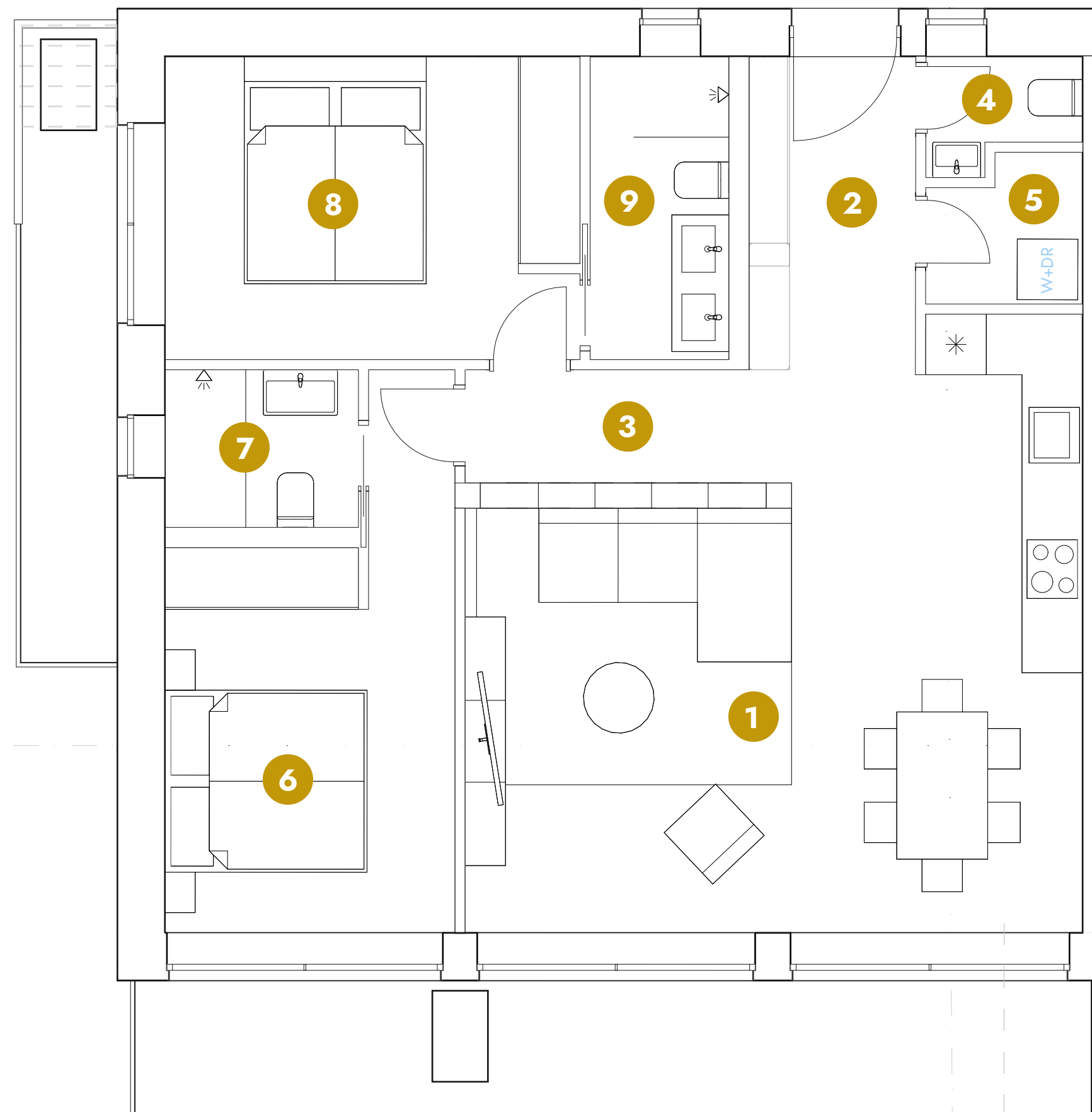
**NOTRANJA POVRŠINA 104,22 m<sup>2</sup>**

### ZUNANJI PROSTORI

BALKON	5,36 m <sup>2</sup>
BALKON	1,00 m <sup>2</sup>
LOGGIA	12,84 m <sup>2</sup>
PARKIRNO MESTO	13,50 m <sup>2</sup>

**ZUNANJE POVRŠINE 32,70 m<sup>2</sup>**

**SKUPNA POVRŠINA 136,92 m<sup>2</sup>**



### SKUPNE POVRŠINE

DOSTOP DO BAZENA	8,16 m <sup>2</sup>
PROSTOR ZA SONČENJE	31,14 m <sup>2</sup>
SKUPNI BAZEN	30,77 m <sup>2</sup>
DOSTOP DO SHRAMB	16,64 m <sup>2</sup>

**86,71 m<sup>2</sup>**



BREGI RESIDENCE D.O.O.  
TRGOVAČKA ULICA 2A, 52470 UMAG, HRVAŠKA

E-mail: [info@bregi-residence.hr](mailto:info@bregi-residence.hr)